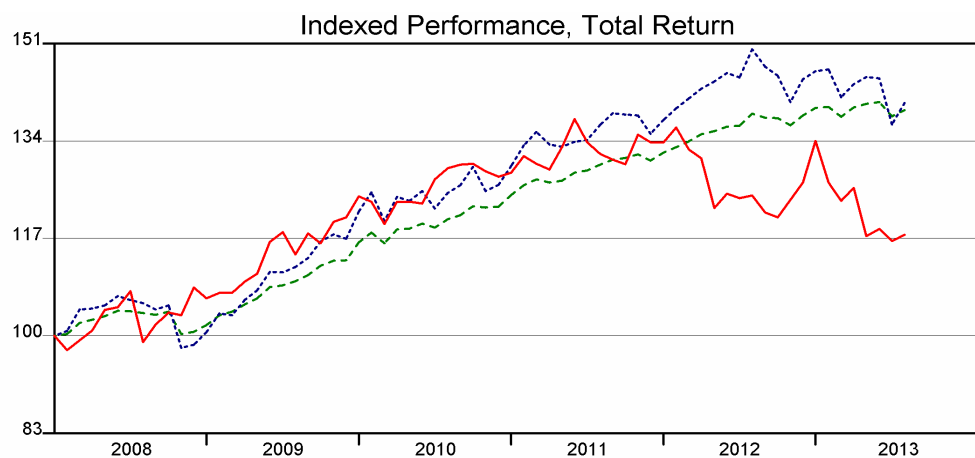
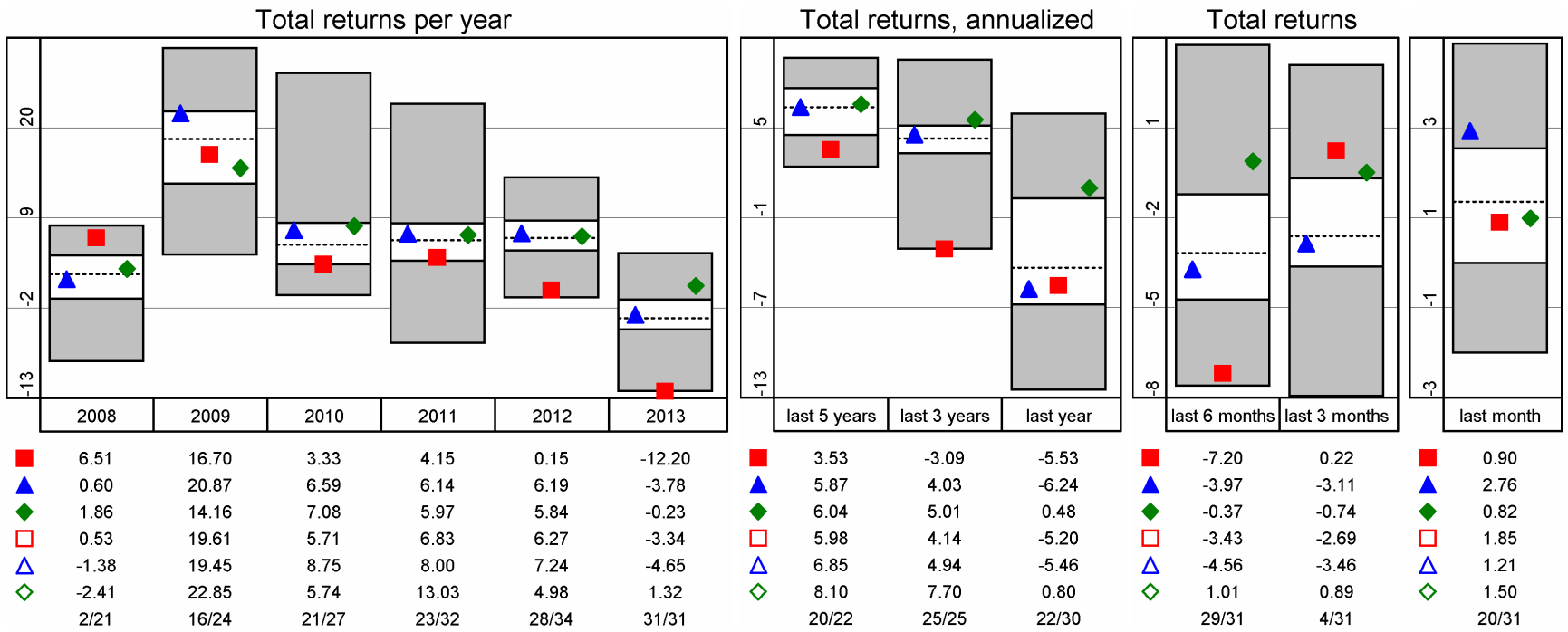
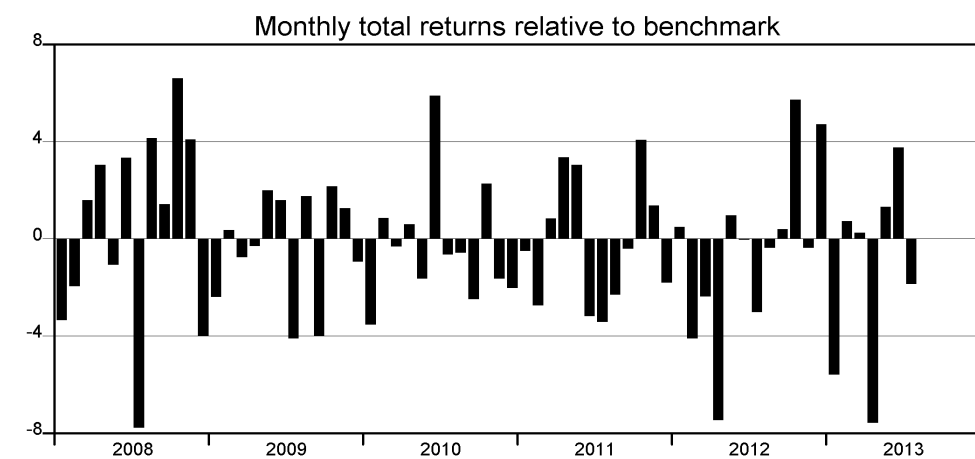


# Directory

SOLVALOR 61



	■	▲	◆	□	△	◇
60 months						
Max Gain	5.70	4.01	2.80	3.79	4.93	10.26
Max Loss	-6.71	-7.04	-3.75	-5.97	-5.64	-10.58
Max Drawdown	-15.40	-8.76	-3.75	-6.92	-7.89	-12.28
Max Rel Return	6.59		3.76	1.21	2.61	6.25
Min Rel Return	-7.77		-1.94	-0.91	-2.95	-5.75
Std Deviation <sup>1</sup>	9.07	7.76	3.53	6.79	8.16	10.03
Tracking Error <sup>1</sup>	10.64		4.56	1.38	4.35	7.09
Correlation	0.22		0.96	0.99	0.85	0.71
R <sup>2</sup> adjusted <sup>2</sup>	0.01		0.91	0.98	0.72	0.49
Beta <sup>2</sup>	0.25		0.44	0.87	0.89	0.92
Bear Beta <sup>2</sup>	0.43		0.50	0.87	0.76	0.91
Bull Beta <sup>2</sup>	0.93		0.50	0.92	0.90	1.41
Sharpe Ratio <sup>1,2</sup>	0.34		1.53	0.79	0.76	0.74
Inform Ratio <sup>1</sup>	-0.21		0.03	0.07	0.21	0.29
Treynor Ratio <sup>1,2</sup>	12.46		12.61	6.29	7.03	8.10
Sortino Ratio <sup>1,2</sup>						
Jensens Alpha <sup>1,2</sup>	1.77		3.17	0.82	1.50	2.53



Legend:	■ SOLVALOR 61	▲ DB Rued Blass Immobilienfonds CH Idx unweighted TR	◆ Lipper Schweiz - Real Estate Switzerland	□ SXI Real Estate Funds TR	△ UBS (CH) Property Fd-Swiss Mixed 'Sima'	◇ LA FONCIERE
---------	---------------	--	--	----------------------------	---	---------------

<sup>1</sup>) annualized <sup>2</sup>) LIBOR CHF 3 Months

